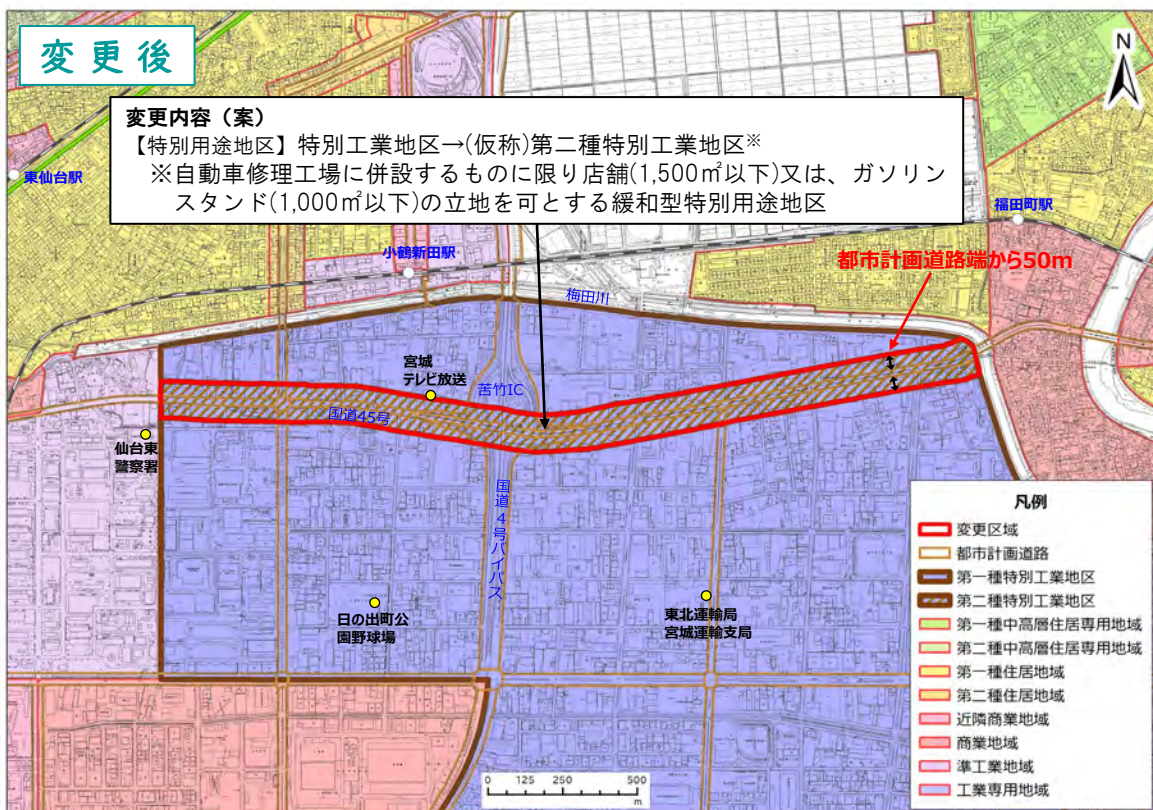
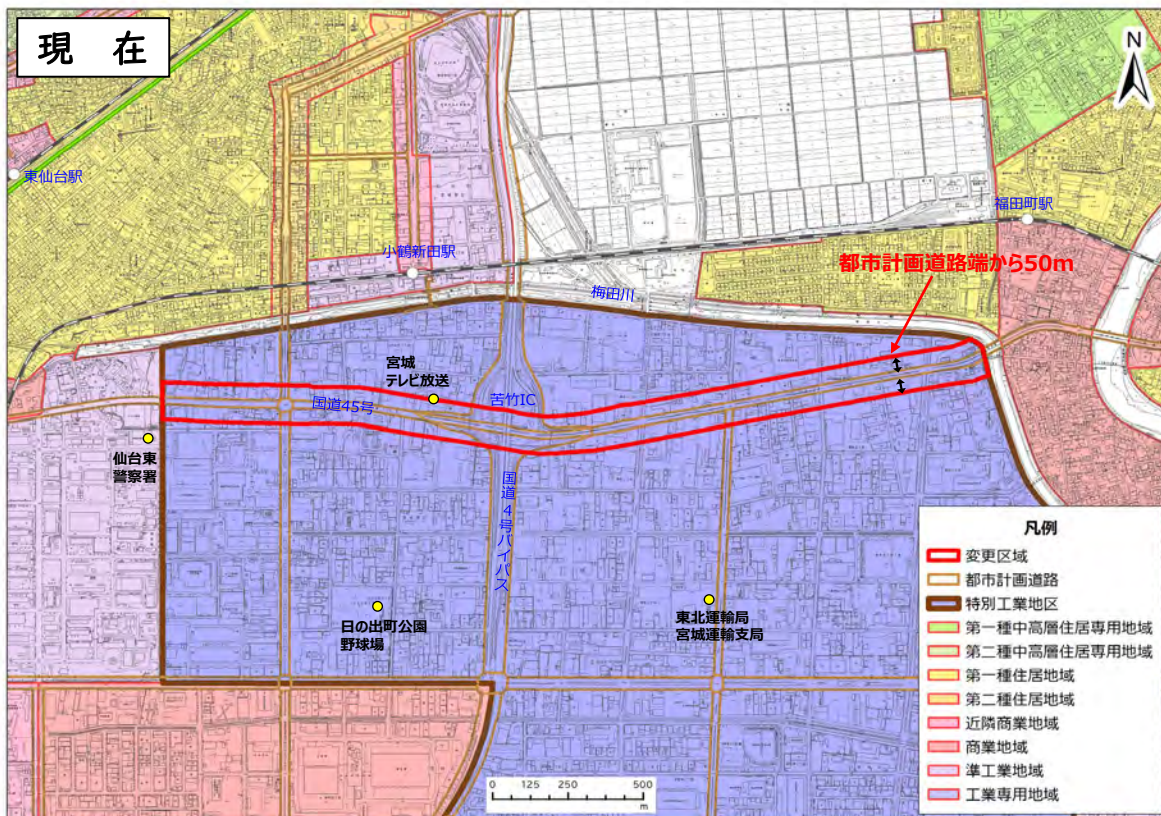
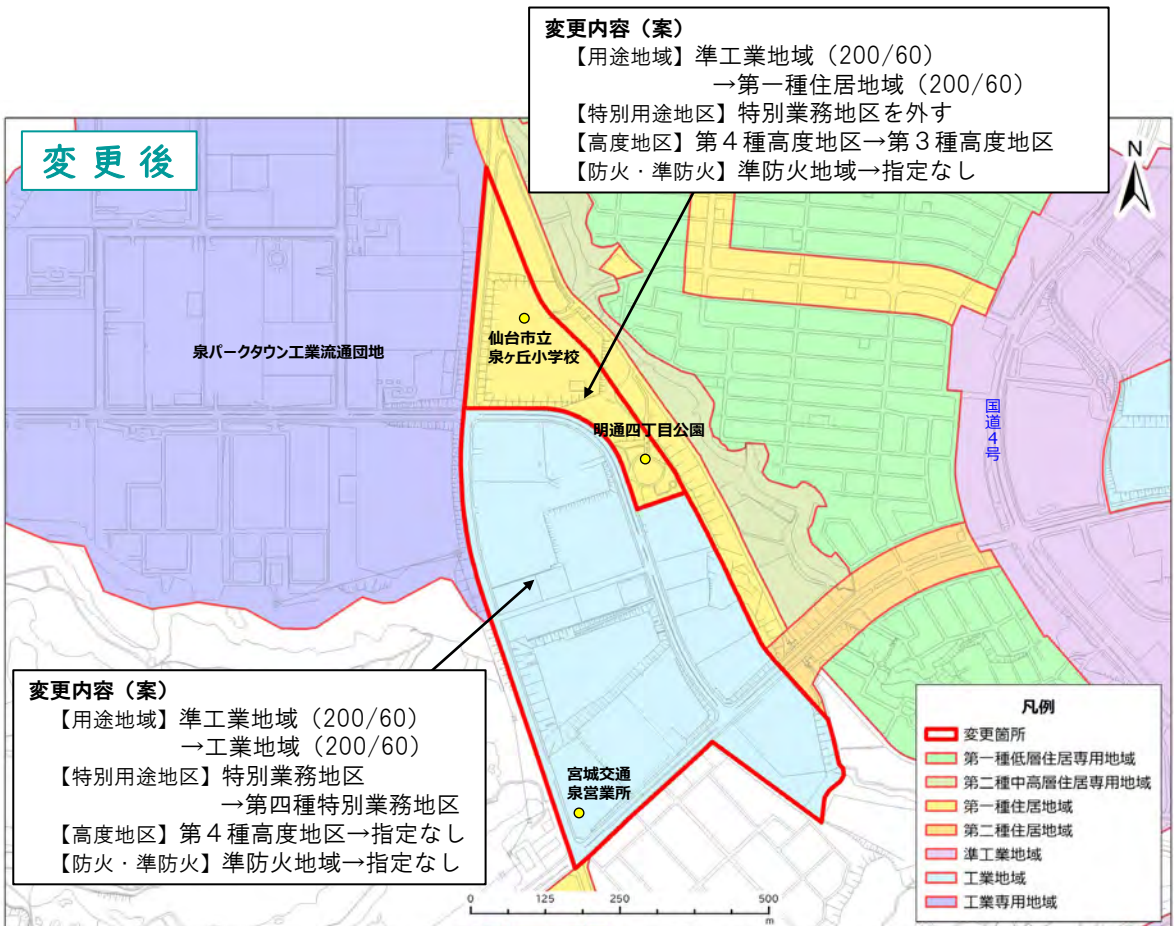
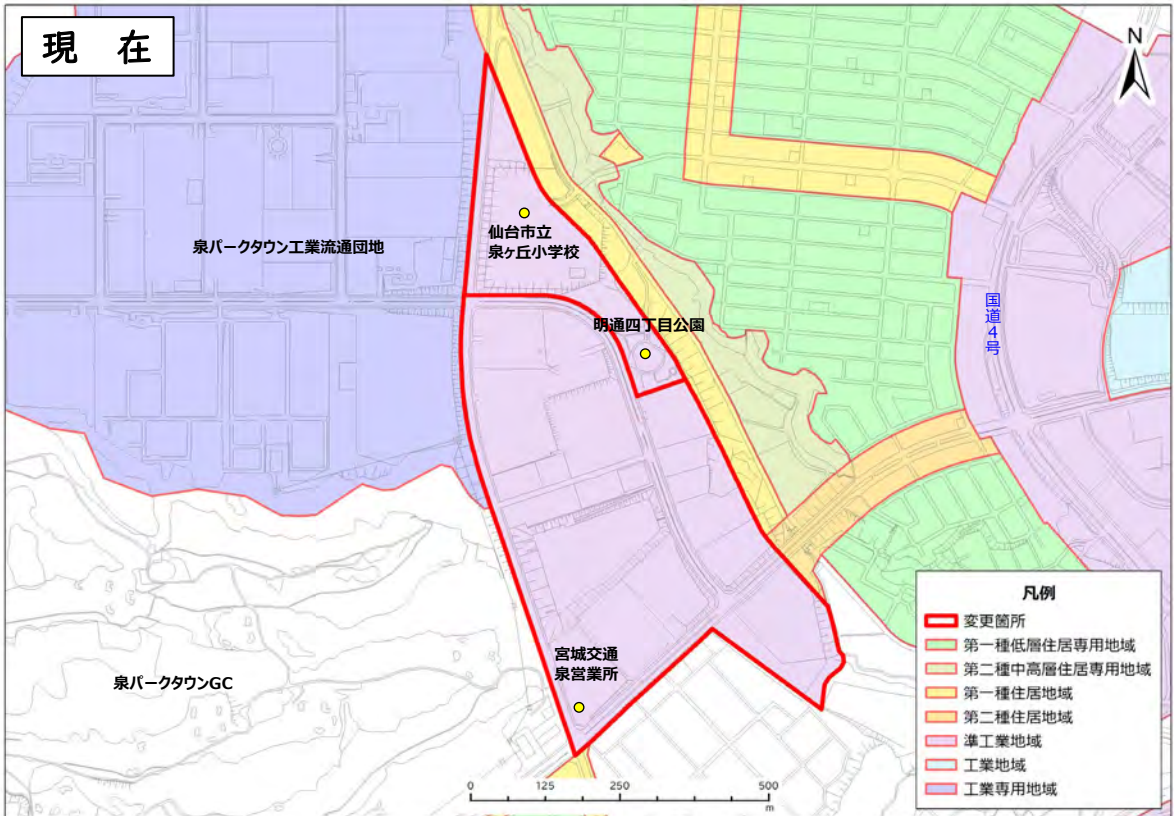


視点4 内陸型工業団地等における産業機能の更新・集積

⑨ 日の出町・扇町地区【行政発意A型】

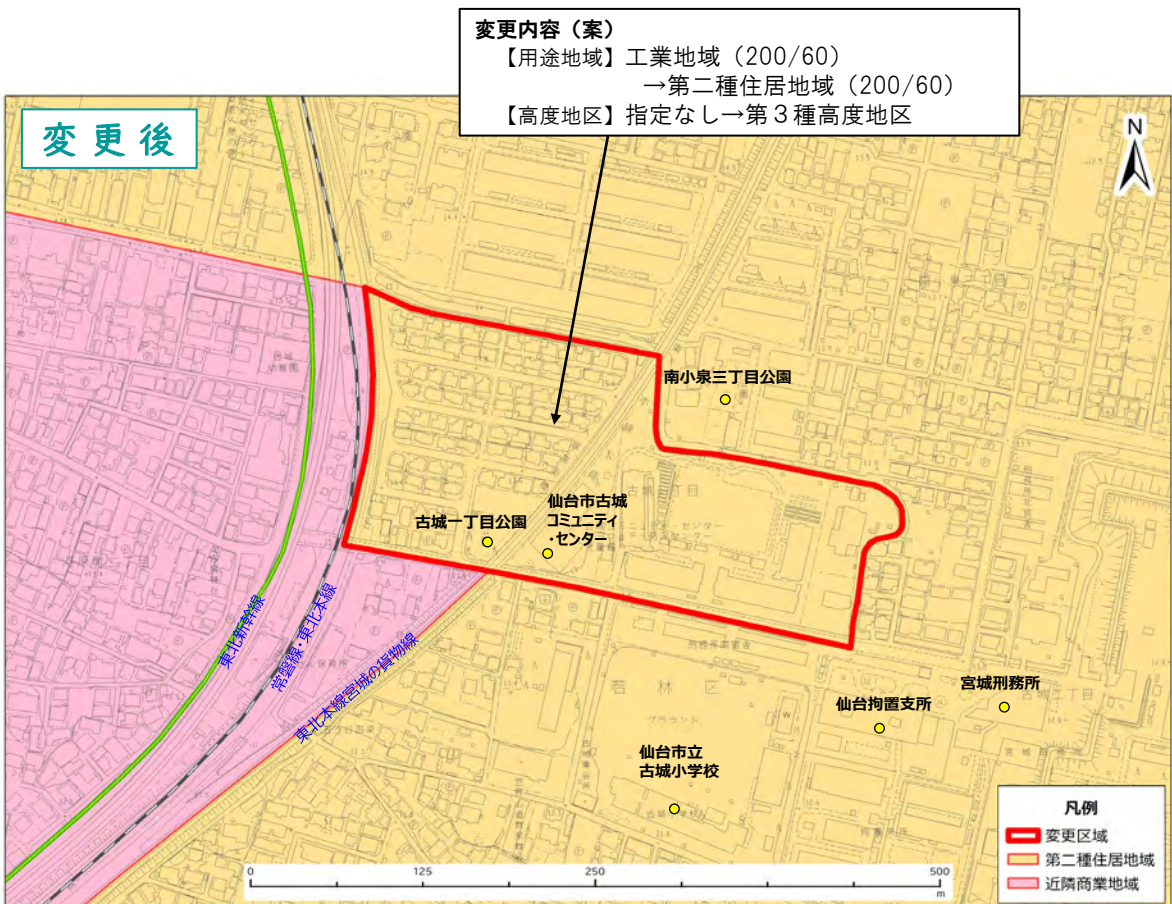
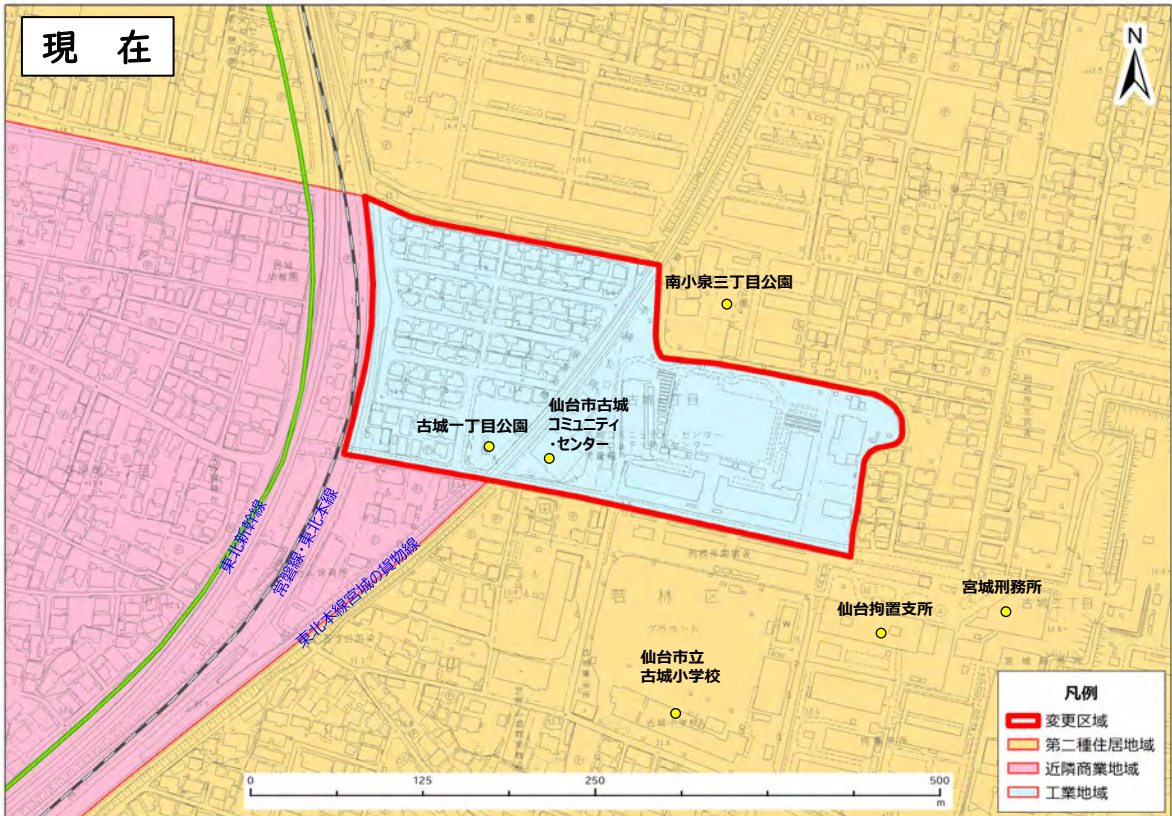


⑩明通地区【行政発意A型】

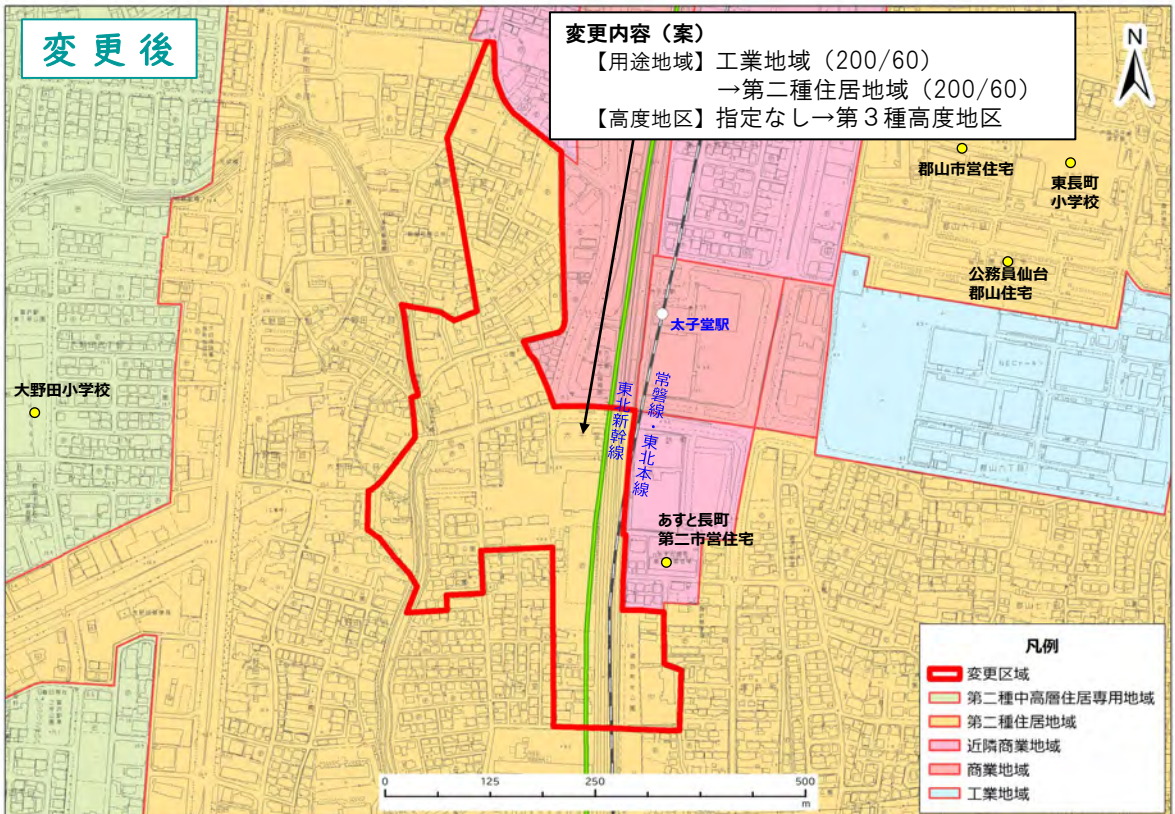
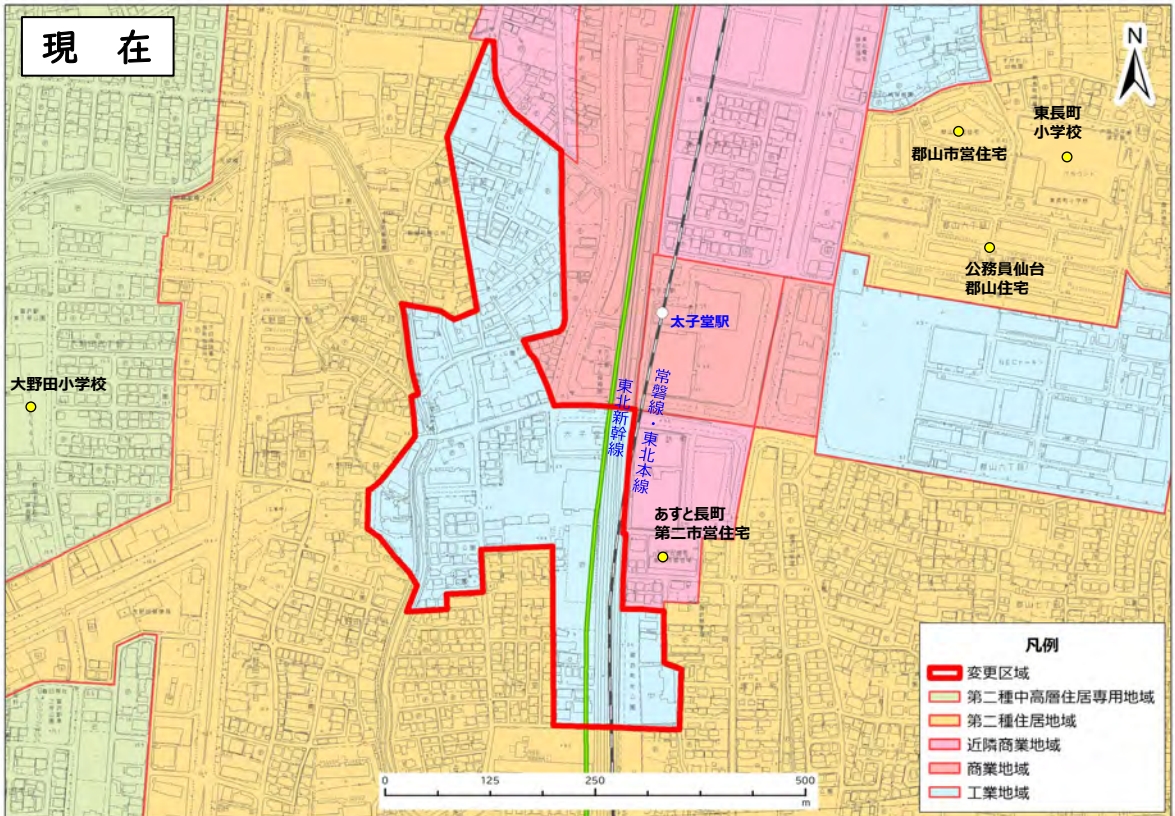


視点5 住宅系土地利用に転換した地区の居住環境の維持・保全

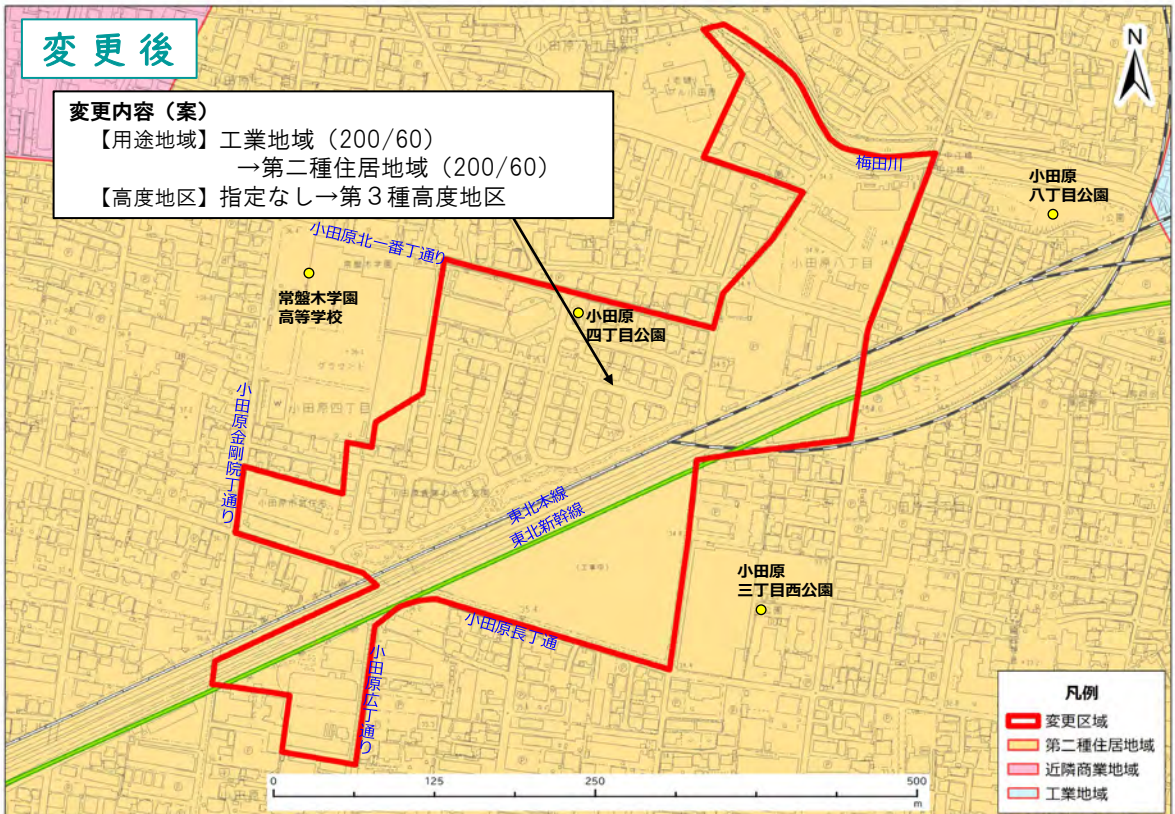
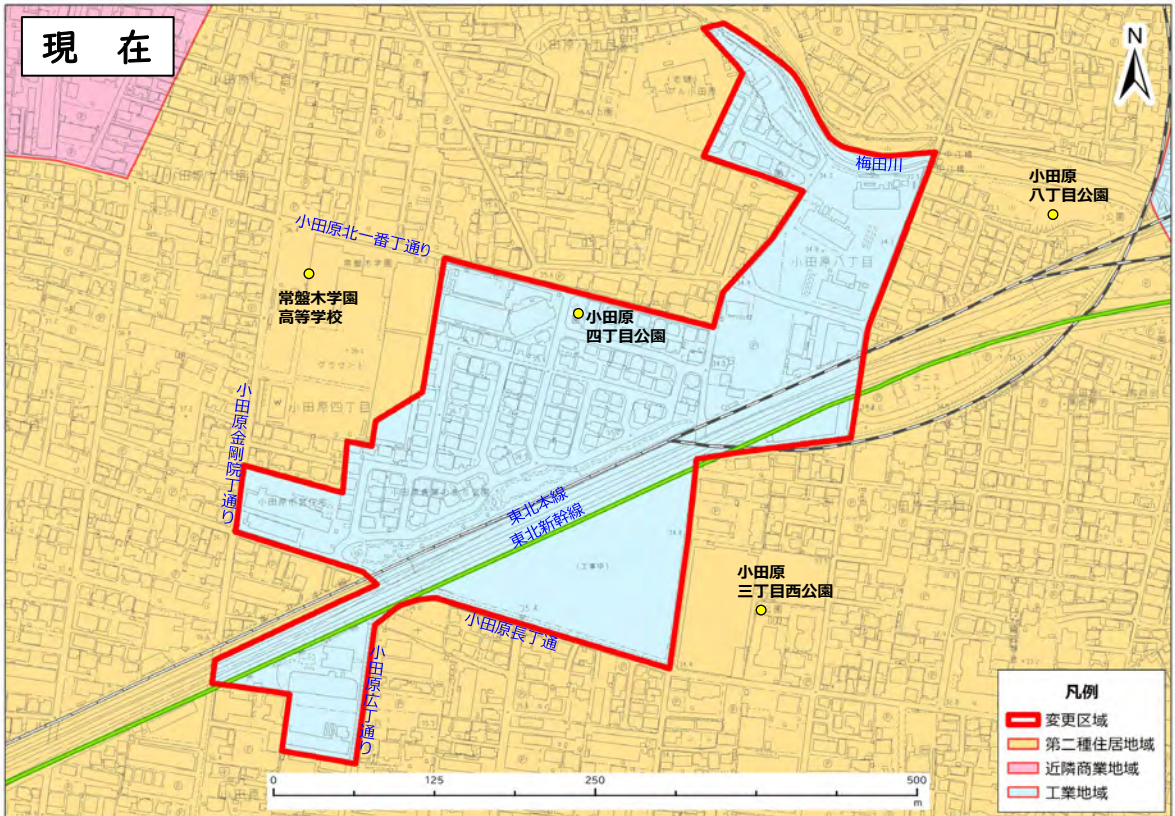
① 古城地区【行政発意A型】



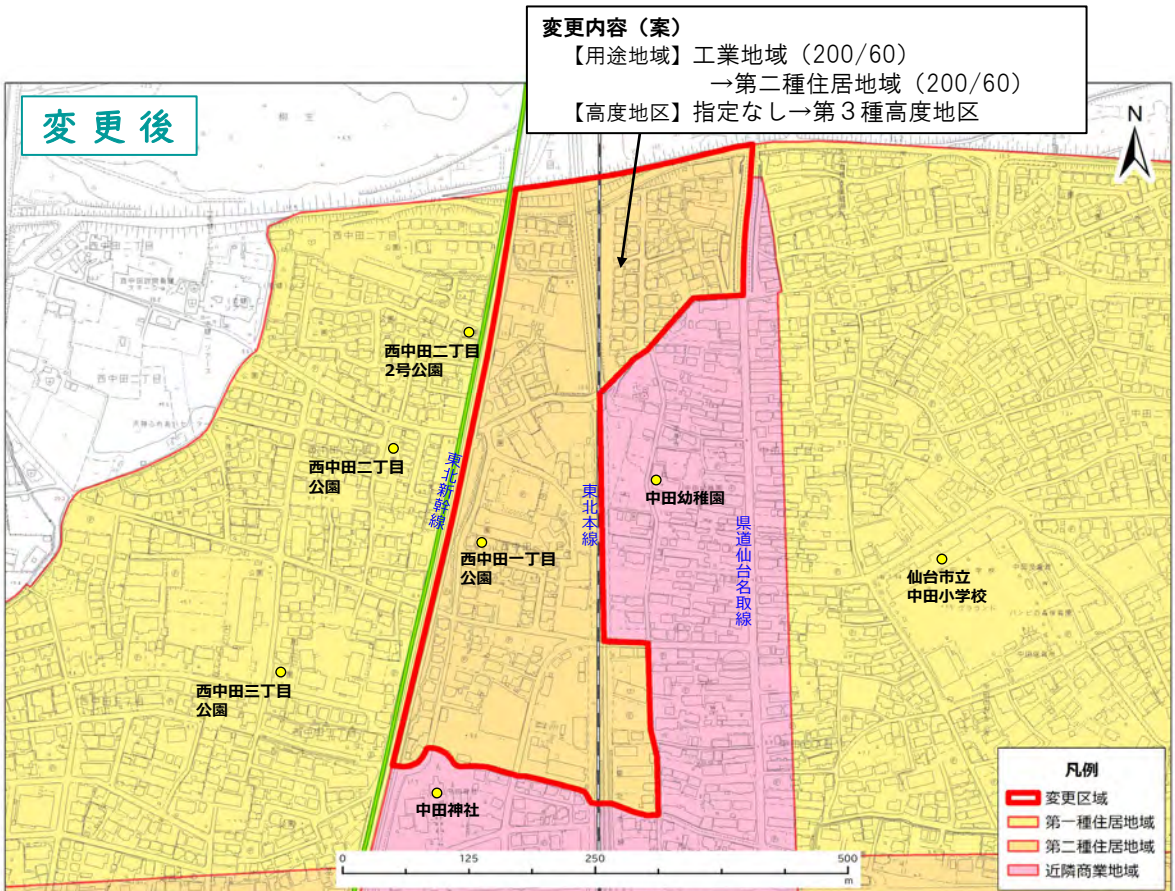
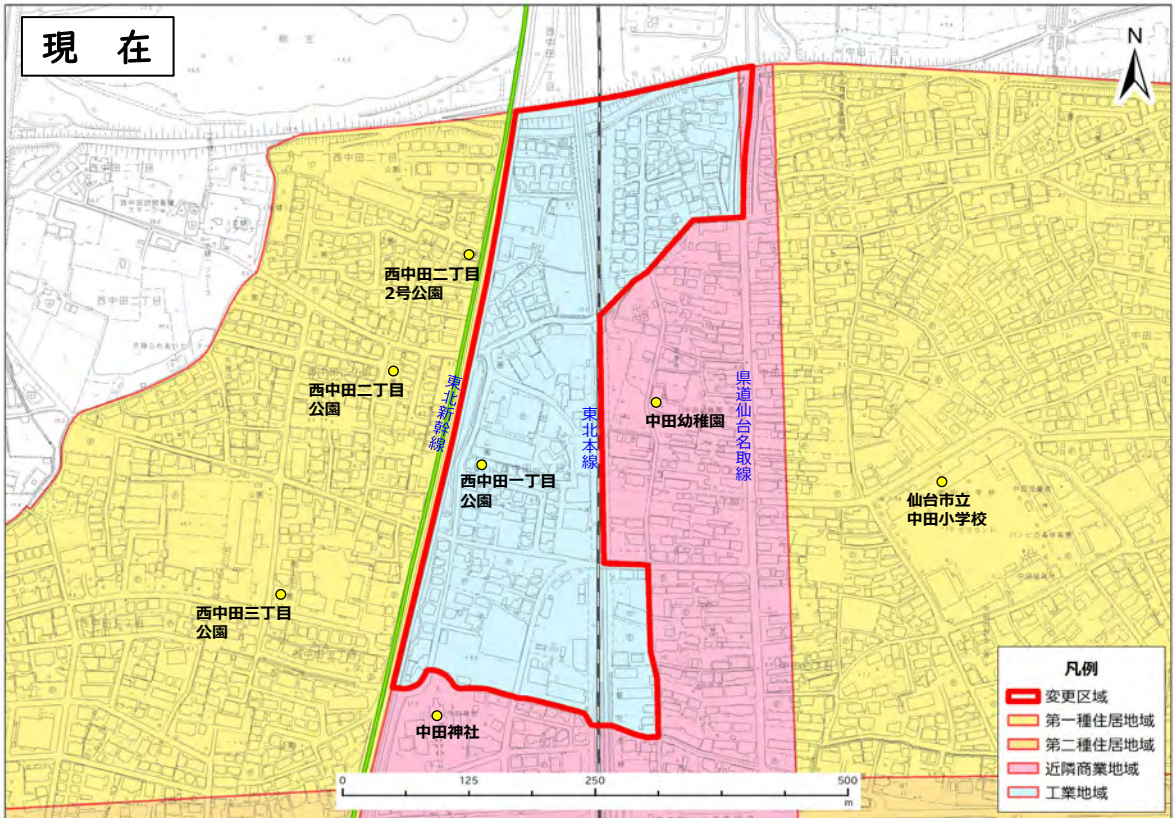
⑫長町南・太子堂地区【行政発意A型】



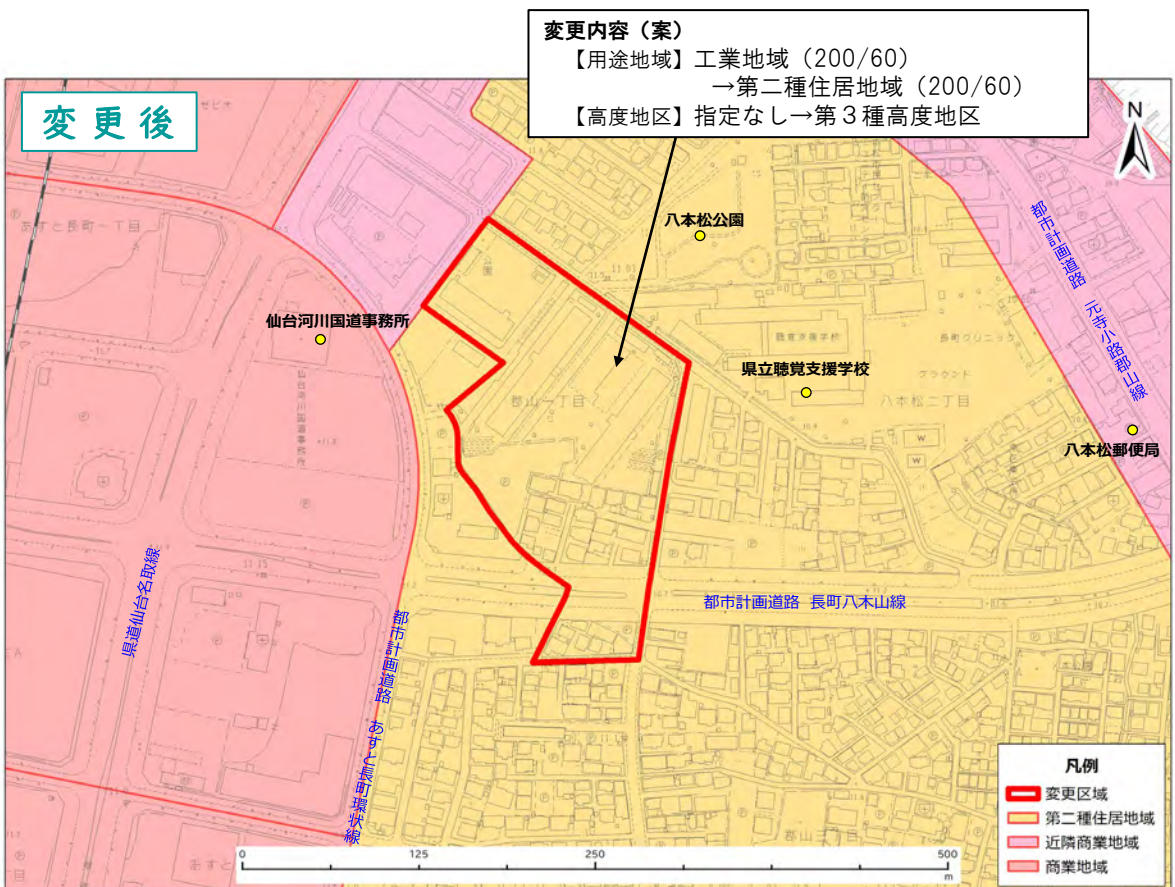
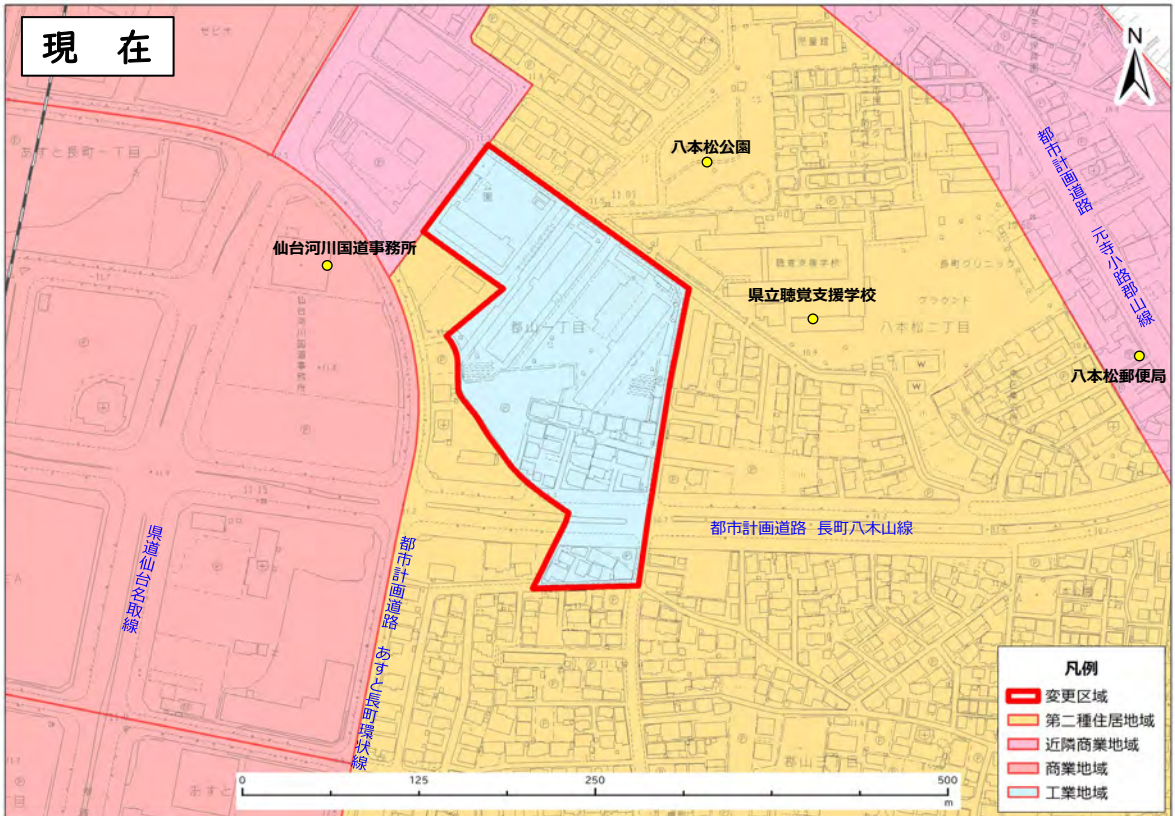
⑬小田原地区【行政発意A型】



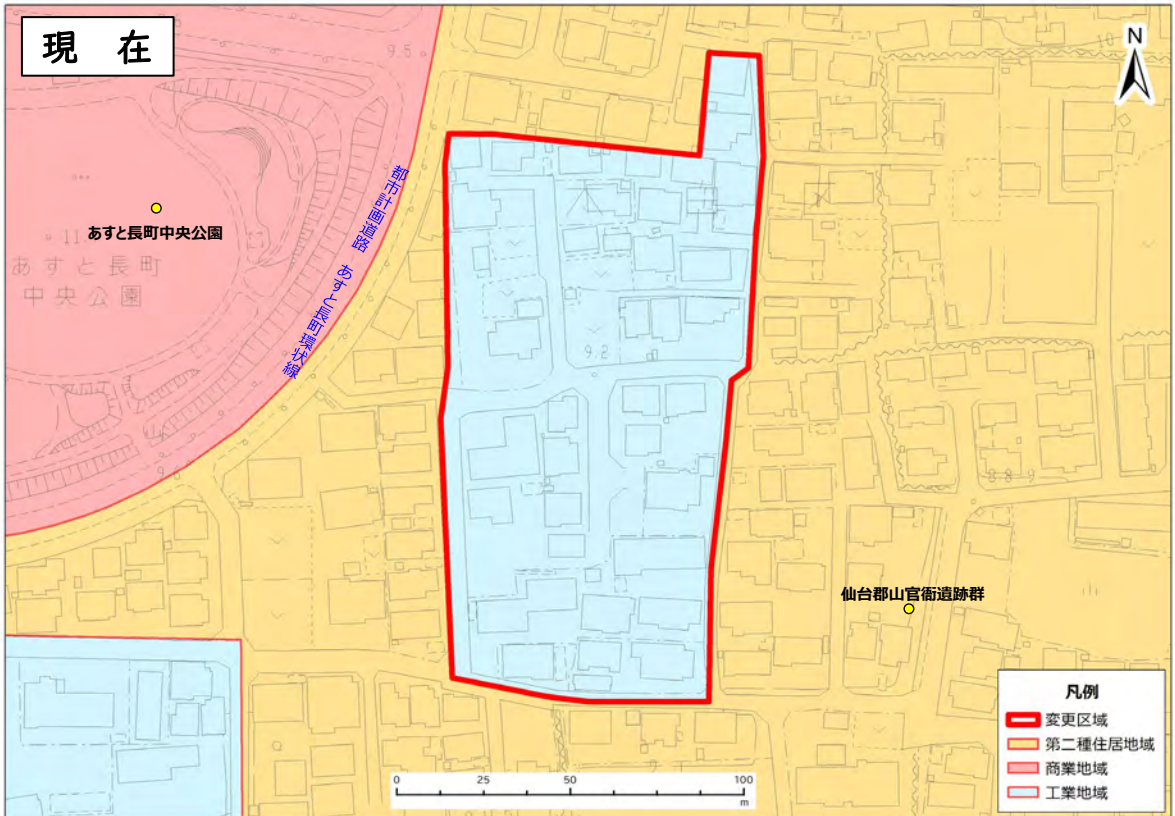
⑭ 中田（北）地区【行政発意A型】



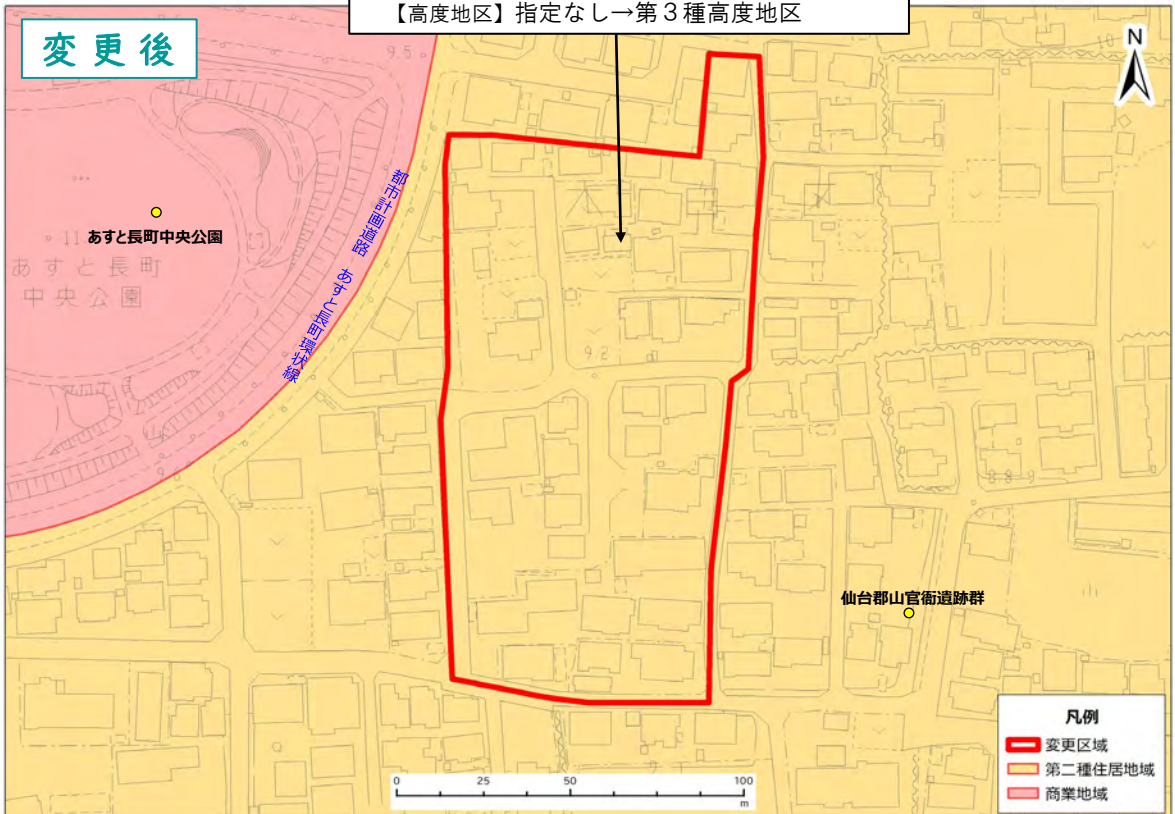
①郡山一丁目地区【行政発意A型】



⑰郡山二丁目地区【行政発意A型】



変更内容(案)
 【用途地域】工業地域(200/60)
 →第二種住居地域(200/60)
 【高度地区】指定なし→第3種高度地区



⑱郡山六丁目地区【行政発意A型】

