

Tsunami Evacuation Guide

● This guide provides an overview of tsunami inundation areas, evacuation sites, and other important information that is necessary for swift evacuation to be carried out, using the Prefectural Tsunami Flood Estimates as its basis and taking into account of the possibility of river ascension caused by tsunamis.

● Spend some time thinking about where you and your family are on a daily basis so that if you feel a strong earthquake or hear about a tsunami warning, everyone can evacuate as quickly as possible.

For those who are in possession of the previous (1st to 5th) editions of this publication, please discard of those as information regarding tsunami inundation areas and evacuation sites are outdated. (Please recycle the guide as "other paper material")

1 Start preparing now

- Prepare an emergency kit with items such as flashlight, portable radio, canned food, drinking water, hand soap, thermometer, and face masks.
- Fix or fasten furnitures in your bedroom and near exits and entry ways, and secure a safe evacuation route in advance.
- To get ready for evacuation during cold weather season, prepare warm clothes, blankets, and heat pads in advance.



2 Find the location of the closest tsunami evacuation site and practice going there on foot

- Practice evacuating to the site and verifying evacuation routes so that you will be able to respond quickly when a disaster strikes.
- Not only locate tsunami evacuation sites nearby your home, but also those close to your school or work place.
- Attend an evacuation drill ever year.



3 Evacuate as soon as possible if you feel strong or long shake

- Evacuate without waiting for a Tsunami Warning.
- Evacuate quickly far inland from the tsunami inundation area, or to the nearest evacuation site.
- Evacuate as to a place that as is high up and far inland, as quickly as possible regardless of any presumptions.



- Stay away from the sea and rivers.
- **You must evacuate on foot.** (If you try to use cars there could be accidents or heavy traffic, which endangers everyone.)
- While you are evacuating, call out to others to encourage them to evacuate with you. "A tsunami is coming!" or "Evacuate with us!" are good things to say to those around you.

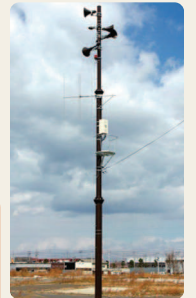
Inquiries

- Disaster Risk Reduction Promotion Section, Crisis Management Bureau TEL: 022-261-1111
- Living Environment Section, Miyagino Ward Office TEL: 022-291-2111
- Living Environment Section, Wakabayashi Ward Office TEL: 022-282-1111
- Living Environment Section, Taihaku Ward Office TEL: 022-247-1111

◆ This guide was made under the supervision of International Research Institute of Disaster Science (Tsunami Engineering), Tohoku University.

4 Actively collect information

Actively collect tsunami information through the Tsunami Information Conveyance System (outdoor speaker installations), publicity vehicles, TV, or radio.



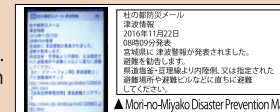
▲ Outdoor speaker installations

● Tsunami Information Conveyance System (Outdoor speaker installations) (Japanese language only)

Information is broadcast through outdoor speakers installed in tsunami inundation areas and also warning devices installed homes. Tsunami warnings and evacuation information is immediately broadcast through siren and voice announcements.

● Mori-no-Miyako Disaster Prevention Mail (Japanese language only)

Sending out information to mobile phones, etc. about any tsunami or other disasters that occur in Sendai. (You need to pre-register for this service.)



For details→



● Emergency Early Warning Mail

Major Tsunami Warning, Tsunami Warning, Tsunami Advisory and evacuation information are sent out by each carrier service provider in the event of a tsunami.

● Sendai City Crisis Management Bureau's Twitter

You can search for disaster information of Sendai City, if you search or follow the "Crisis Management Bureau" or "@sendai_kiki2". (You need to pre-register for this service.)

For details→



● Sendai City Evacuation Information Website

Evacuation information and tsunami evacuation facilities can easily be searched on this website.

For details→



● Sendai City Evacuation Information Hotline (Japanese language only)

Evacuation information is sent out through automatic announcements to land-line phones of households without cellphones or smartphones. Pre-registration is required.

For details→



Inquiries : Crisis Countermeasures Section, Crisis Management Bureau (TEL: 022-214-3049)

※ For more information and how to register for these services, please visit the Emergency and Disaster Prevention Page on the official website of the City of Sendai. (<https://www.city.sendai.jp/kikikanri/kurashi/anzen/saigaitaisaku/sonaete/joho/index.html>)

5 Do not leave the evacuation facility or site until the Tsunami Warning is canceled

- Tsunami waves are expected to hit repeatedly, and the following tsunami waves may be even bigger than the initial tsunami.
- Stay calm and keep away from the tsunami inundation areas until the Tsunami Warning is canceled.



The same applies for tsunami that occurs as a result of earthquakes from far away (for example, earthquakes in Chile). Be sure to collect information and evacuate accordingly.

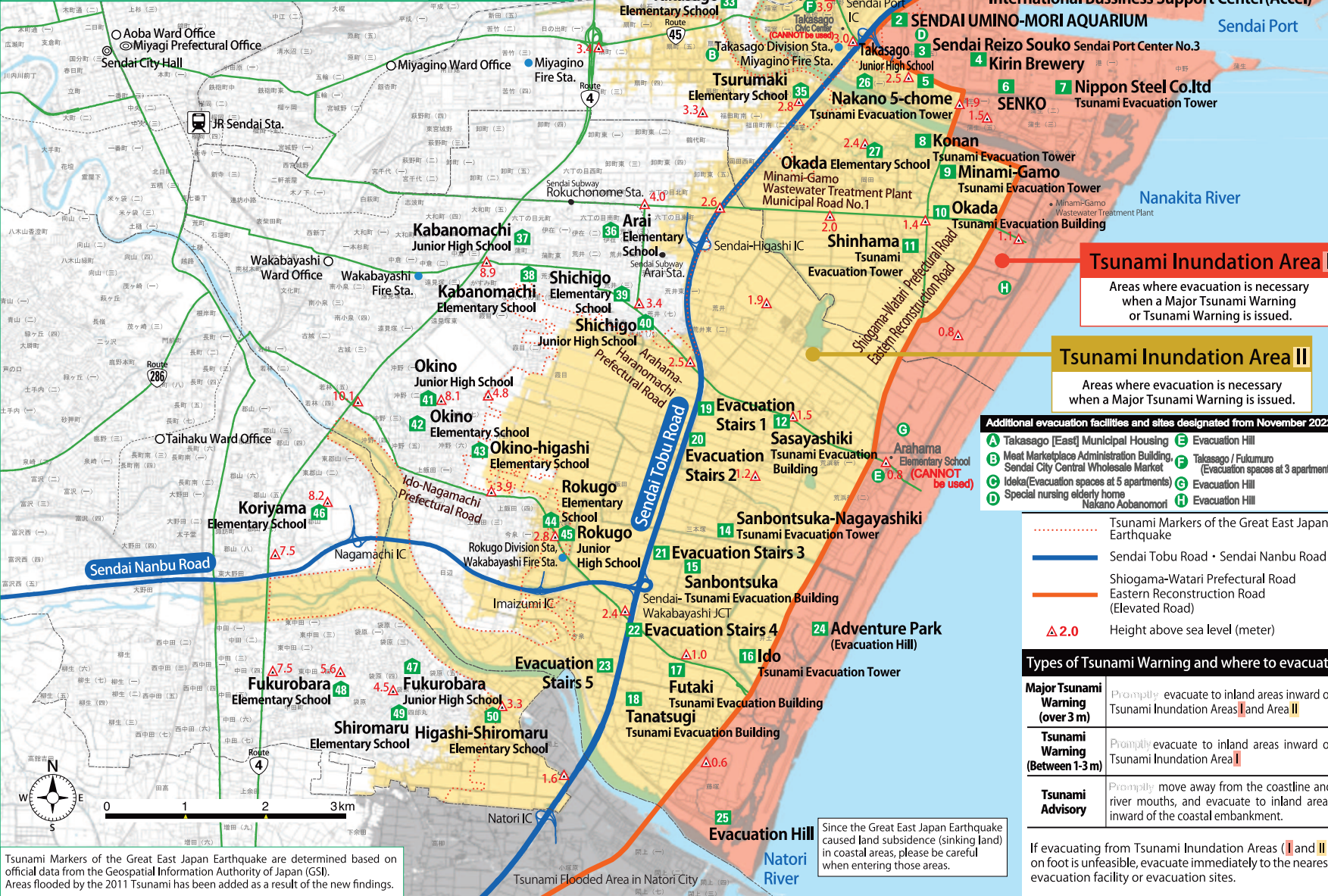
Map of Tsunami Inundation Areas and Evacuation Facilities and Sites

For details regarding tsunami inundation areas and tsunami flood estimates (depth of a flood), please refer to the Sendai Kurashi-no Map (Japanese language only)

<https://www2.wagmap.jp/sendaicity/Portal>

Check the location of tsunami inundation areas. Bring a radio or mobile phone with you when you enter these areas.

January 2025



Tsunami Markers of the Great East Japan Earthquake are determined based on official data from the Geospatial Information Authority of Japan (GSI). Areas flooded by the 2011 Tsunami has been added as a result of the new findings.

Since the Great East Japan Earthquake caused land subsidence (sinking land) in coastal areas, please be careful when entering those areas.

List of Evacuation Facilities and Sites

1. Facilities and sites that can be used for temporary evacuation (Emergency response type)

- 1 Sendai Port International Business Support Center (Accel)
- 2 SENDAI UMINO-MORI AQUARIUM
- 3 Sendai Reizo Souko Sendai Port Center No.3
- 4 Kirin Brewery
- 5 NAKO 5-chome Tsunami Evacuation Tower
- 6 SENKO
- 7 Nippon Steel Co.Ltd Tsunami Evacuation Tower
- 8 Konan Tsunami Evacuation Tower
- 9 Minami-Gamo Tsunami Evacuation Tower
- 10 Okada Tsunami Evacuation Building
- 11 Shinjima Tsunami Evacuation Tower
- 12 Sasayashiki Tsunami Evacuation Building
- 13 Arahama Elementary School (This facility cannot be used for evacuation from October 31, 2024)
- 14 Sanbontsuka-Nagayashiki Tsunami Evacuation Tower
- 15 Sanbontsuka Tsunami Evacuation Building
- 16 Ido Tsunami Evacuation Tower
- 17 Futaki Tsunami Evacuation Building
- 18 Tanatsugi Tsunami Evacuation Building

Tsunami Evacuation Facilities



Tsunami Evacuation Sites



(Outdoors)

- 19 Evacuation Stairs 1
- 20 Evacuation Stairs 2
- 21 Evacuation Stairs 3
- 22 Evacuation Stairs 4
- 23 Evacuation Stairs 5
- 24 Adventure Park (Evacuation Hill)
- 25 Evacuation Hill

2. Facilities that can be used for prolonged evacuation (Long term response type)

- 26 Takasago Junior High School ※1
- 27 Okada Elementary School ※1
- 28 Nakanosakae Elementary School ※2
- 29 Nakano Junior High School ※2
- 30 Fukumuro Elementary School ※2
- 31 Tago Elementary School
- 32 Tago Junior High School
- 33 Takasago Elementary School
- 34 Takasago Civic Center (This facility cannot be used for evacuation from January 6, 2025)
- 35 Tsurumaki Elementary School ※2
- 36 Arai Elementary School
- 37 Kabanomachi Junior High School
- 38 Kabanomachi Elementary School
- 39 Shichigo Elementary School
- 40 Shichigo Junior High School
- 41 Okino Junior High School
- 42 Okino Elementary School
- 43 Okino-higashi Elementary School
- 44 Rokugo Elementary School ※2
- 45 Rokugo Junior High School ※2
- 46 Koriyama Elementary School
- 47 Fukurobara Junior High School
- 48 Fukurobara Elementary School
- 49 Shiromaru Elementary School
- 50 Higashi-Shiromaru Elementary School ※2

Designated Shelter

※1 In case of a Major Tsunami Warning, evacuate to the upper floors or rooftop of a building.

2 In case of a Major Tsunami Warning, evacuate to second floor or above of a building.

Tsunami Inundation Area I
Areas where evacuation is necessary when a Major Tsunami Warning or Tsunami Warning is issued.

Tsunami Inundation Area II
Areas where evacuation is necessary when a Major Tsunami Warning is issued.

- Additional evacuation facilities and sites designated from November 2022
- A Takasago [East] Municipal Housing
 - B Meet Marketplace Administration Building
 - C Ideka (Evacuation spaces at 5 apartments)
 - D Special nursing elderly home Nakano Aobanomori
 - E Evacuation Hill
 - F Takasago / Fukumuro (Evacuation spaces at 3 apartments)
 - G Evacuation Hill
 - H Evacuation Hill

- Tsunami Markers of the Great East Japan Earthquake
- Sendai Tobu Road · Sendai Nanbu Road
- Shiogama-Watari Prefectural Road
- Eastern Reconstruction Road (Elevated Road)
- △ 2.0 Height above sea level (meter)

Types of Tsunami Warning and where to evacuate

Major Tsunami Warning (over 3 m)	Promptly evacuate to inland areas inward of Tsunami Inundation Areas I and Area II
Tsunami Warning (Between 1-3 m)	Promptly evacuate to inland areas inward of Tsunami Inundation Area I
Tsunami Advisory	Promptly move away from the coastline and river mouths, and evacuate to inland areas inward of the coastal embankment.

If evacuating from Tsunami Inundation Areas (I and II) on foot is unfeasible, evacuate immediately to the nearest evacuation facility or evacuation sites.