

# Traffic

## Sendai City Urban Transportation Plan

In new Sendai City Urban Transportation Plan formulated in March 2021 as a guideline for the City's future transportation policy in light of the declining population and aging society, efforts are proposed to enhance urban transportation focused on public transportation that is not overly dependent on private vehicles, as well as restructuring the transportation environment, such as creating comfortable pedestrian spaces that encourage walking, and the development of a smooth travel environment using public transportation, bicycles and so on.

The City will also promote transportation policies that will support various urban activities, including the formation of a safe and secure transportation environment for daily life.

### ◆Future goals of transportation

#### Realizing a transportation system centered on high-quality public transportation that supports the "New City of Trees" and leads Tohoku

- Taking on the challenge of realizing an easy-to-use public transportation system and creating a community that is comfortable to live in -

### ■Image of the ideal future transportation system

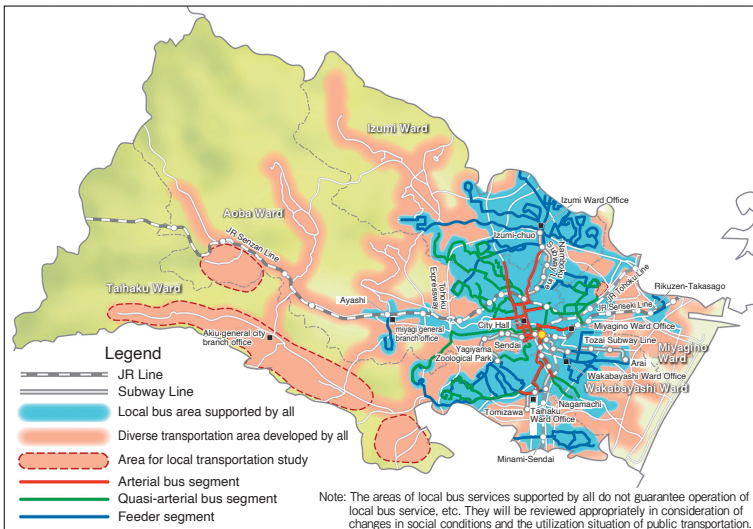
In the future, the City of Sendai will work to realize a transportation system centered on high-quality public transportation which is not overly dependent on private car ownership. Specifically, the city will expand the use of feeder buses connected to railway stations, which has been promoted so far to maximize the use of rail, establish a bus trunk line axis in areas where the main means of transportation is direct bus service to the city center, and secure and strengthen means of transportation that utilize local transportation. In addition, efforts will be made to improve major arterial roads that support a variety of urban activities.

### ◆Basic policy and implementation measures

Policy① Enhancing urban transportation with a focus on high-quality public transportation

Policy② Restructuring of the urban transportation environment to create a lively atmosphere

Policy③ Promotion of transportation policies to support diverse urban activities



Map: Public Transportation Network (Sendai City Local Public Transportation Plan)

## Sendai City Local Public Transportation Plan

Towards building a sustainable transportation network, the City has taken initiatives in collaborating with businesses and citizens, and the Sendai City Local Public Transportation Plan was established in March 2022, which sets out the public transportation system and measures in accordance with local circumstances including railroads, local buses, taxis and local transportation. The City will also steadily promote each policy to secure sustainable means of transportation.

### ■Goal for public transportation

In collaboration with citizens, the City aims to realize daily life with high mobility and improvement of the city's liveliness, by securing sustainable, high-quality and accessible public transportation that is appropriate to local circumstances.

### ■Basic policy

Basic Policy 1: Form public transportation axes and enhance its function

Basic Policy 2: Improve convenience of local buses

Basic Policy 3: Maintain, secure and enhance local transportation

Basic Policy 4: Strengthen urban transit system

Basic Policy 5: Make public transportation seamless and promote utilization

### ■Building a public transportation network

#### Area selection

Areas where Local bus services are supported by all	Areas where primarily local bus services are maintained as demanded
Areas securing diverse transportation developed by all	Areas given consideration on appropriate means of transportation among transportation services such as local buses, or local transportation in accordance with local circumstances, under three-way opinion exchange with the community, transportation operators and the administration

#### Segment selection (within the areas of local bus services supported by all)

Arterial bus route segment	Segments securing accessibility to the city center through services following railroads
Quasi-arterial bus route segment	Segments securing accessibility to the city center through the services following arterial bus route segments
Feeder segment	Segments secured as access routes to railway stations

②フィーダー区間における利便性向上策の実施

Table: List of policies to be included in the Local Public Transportation Plan

Basic policy on public transportation	Respective measures
1. Form public transportation axes and enhance its function	(1) Implement measures to improve convenience in arterial bus route segments and quasi-arterial bus route segments
	(2) Implement measures to improve convenience in Feeder segment
2. Improved convenience of local buses	(3) Enhance the function of existing railroads
	(4) Secure and enhance community-based means of transportation
3. Maintain, secure and enhance local transportation	(5) Develop transportation hubs connecting with local transportation and local buses, etc.
	(6) Promote urban transit services using public transportation
4. Strengthen urban transit system	(7) Consider introducing new technologies such as autonomous driving
	(8) Improve the environment of the bus waiting area
5. Make public transportation seamless and promote utilization	(9) Improve services for providing information and guidance on public transportation
	(10) Promote the use of public transportation through pricing policies, etc.
	(11) Promote the use of cashless payment
	(12) Implement barrier-free design in stations, buses, subway cars, etc.
	(13) Promote mobility management
	(14) Promote MaaS
	(15) Develop an environment with mobility for tourists, etc.